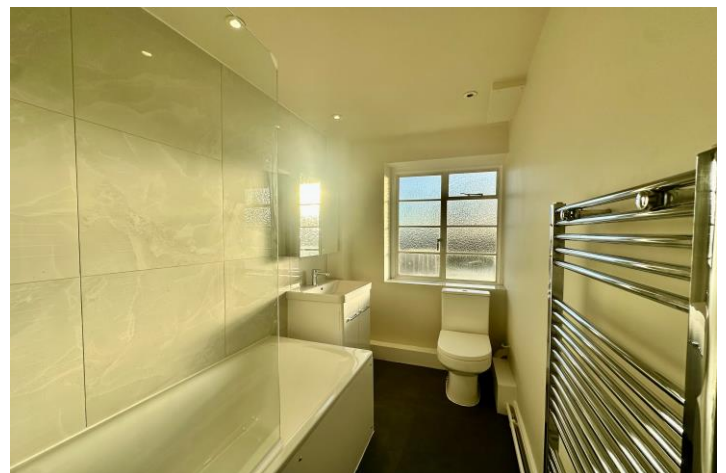




**Hornsey Lane, Highgate, N6**

**Monthly Rental Of £2,050**

A fabulous newly decorated Two bed featuring a brand-new fitted bathroom on the 6th (top) floor (with lifts) in this landmark Art Deco purpose built block. This bright south facing apartment features a sunny reception room with balcony and superb far reaching City views. Double and single (both fitted) bedrooms, brand new bathroom and separate kitchen further benefits include ample off street parking, communal gardens and portorage. Northwood Hall is very conveniently located for fast access to Central London and the City, with all the amenities of both historic Highgate Village and bustling Crouch End Broadway on the doorstep with the green open spaces of the Parkland Walk, Highgate and Queen's woods and Waterlow Park on the doorstep. Unfurnished.





**Two Bedroom top floor apartment in Purpose Built Block with Lifts | Entrance Hall | Reception room with access onto Balcony and amazing city views ! | Fitted kitchen | Brand new fitted bathroom | Fitted double and single bedrooms | Wood floors | Porterage | Ample On site Parking (first come first served) | Close both Archway & Highgate Tubes on Northern Line | Unfurnished |**



**For similar properties please visit our website [www.litchfields.com](http://www.litchfields.com)**

Or call us on 0208 458 8000

